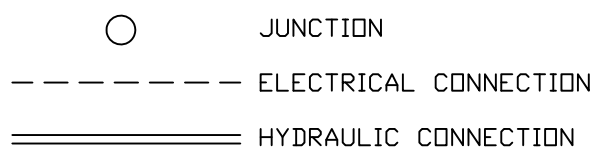
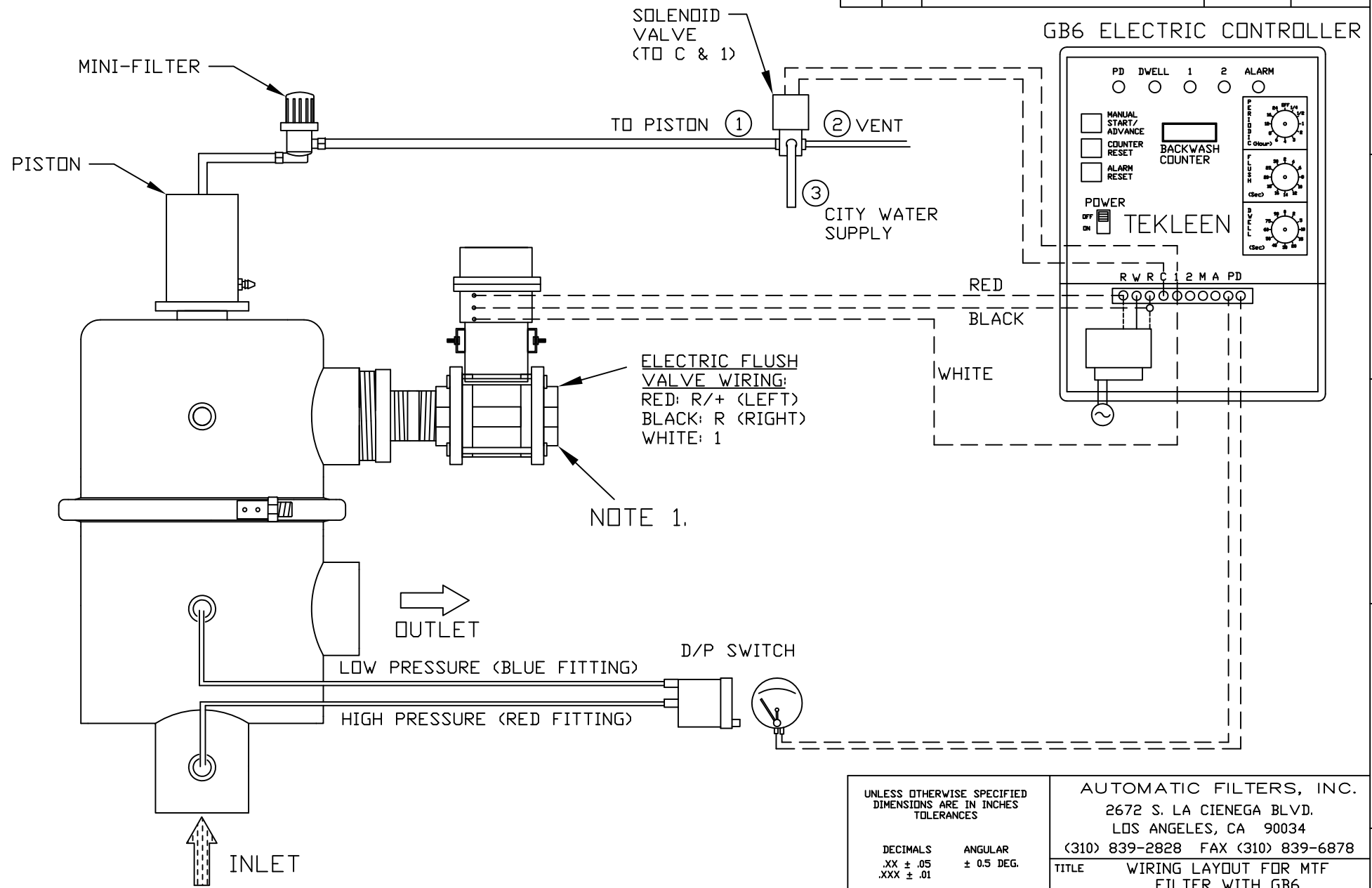


REVISIONS				
REV	ZONE	DESCRIPTION	DATE	APPROVED
1	3A	ADDED NOTE 1 REGARDING UNION.	09/24/13	S.P.



NOTES:  
 1. IT IS RECOMMENDED THAT A UNION BE INSTALLED BETWEEN THE FLUSH VALVE AND FLUSH LINE FOR EASE OF MAINTENANCE.

UNLESS OTHERWISE SPECIFIED DIMENSIONS ARE IN INCHES TOLERANCES		AUTOMATIC FILTERS, INC. 2672 S. LA CIENEGA BLVD. LOS ANGELES, CA 90034 (310) 839-2828 FAX (310) 839-6878	
DECIMALS .XX ± .05 .XXX ± .01	ANGULAR ± 0.5 DEG.	TITLE WIRING LAYOUT FOR MTF FILTER WITH GB6 CONTROLLER, ELECTRIC BALL VALVE, AND SOLENOID VENT FOR PISTON	
DRAWN S. PERKINSON	DATE 07/22/11	SIZE A	DWG NO. WIRE-MTFGB6-EFV-LAY-01
CHECKED		REV 1	
DESIGN FOR:		NOT TO SCALE	SHEET 1 OF 1